

# FP2 - TIP 'O THE WEEK #90

## INSTALLING UPDATES



### Installing Updates

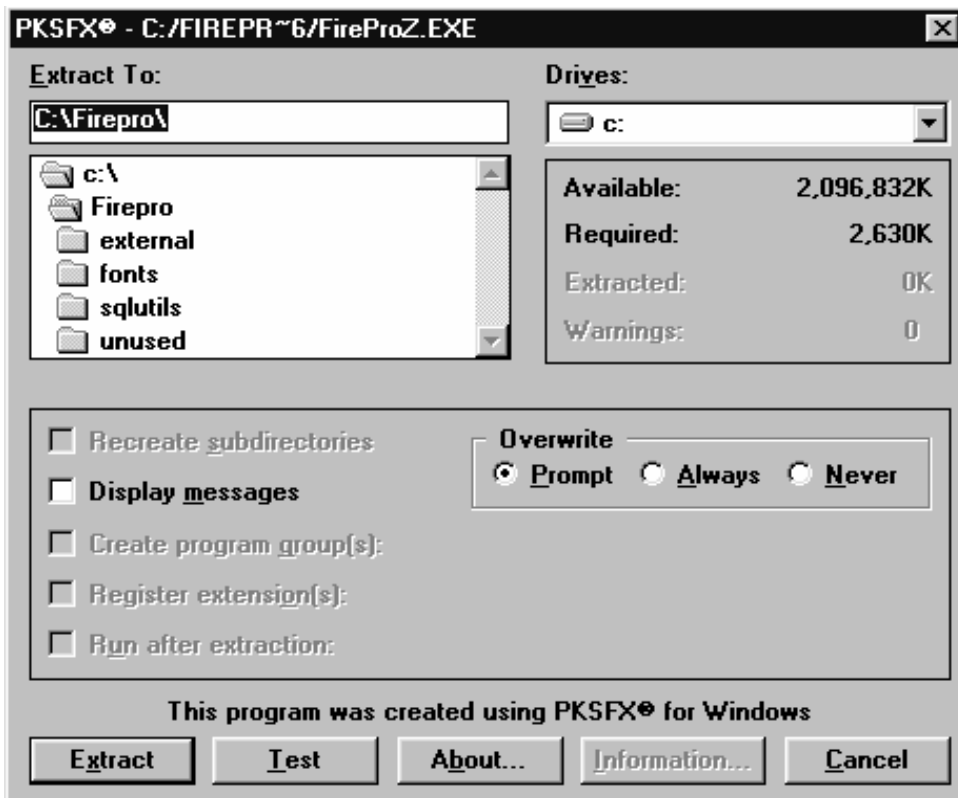
FirePro 2 program updates are sent out to you from time to time by email. This enables you to have all the newest features and enhancements that have been added in to FirePro 2. If you ever have a suggestion for changes or improvements to the program, please let us know! Most of the enhancements are a result of input from FirePro users.

The attachment will come as a compressed zip file with the version number in its name. Normally you will only need to run this update on the computer that stores FirePro 2 (usually in a folder called Firepro).

In each e-mail you will receive install instructions and update notes detailing any changes to the program since we sent out a previous version to you. If you don't get an update installed and you receive a new update from us, it's ok! You don't need to install the previous versions -- just install the newest update. You may wish to go back and look at the notes from previous updates though.

Before installing a new version quit FirePro 2 and backup both the FirePro2.lbs file and your data file which is usually named "your town".df1.

When you open this attachment you will get something like the following window:



#### *Extract To*

This field is defaulted to C:\FirePro\, which will work if the FirePro folder is located on the computer you are running this from.

Otherwise you will need to do one of the following:

type in the correct path

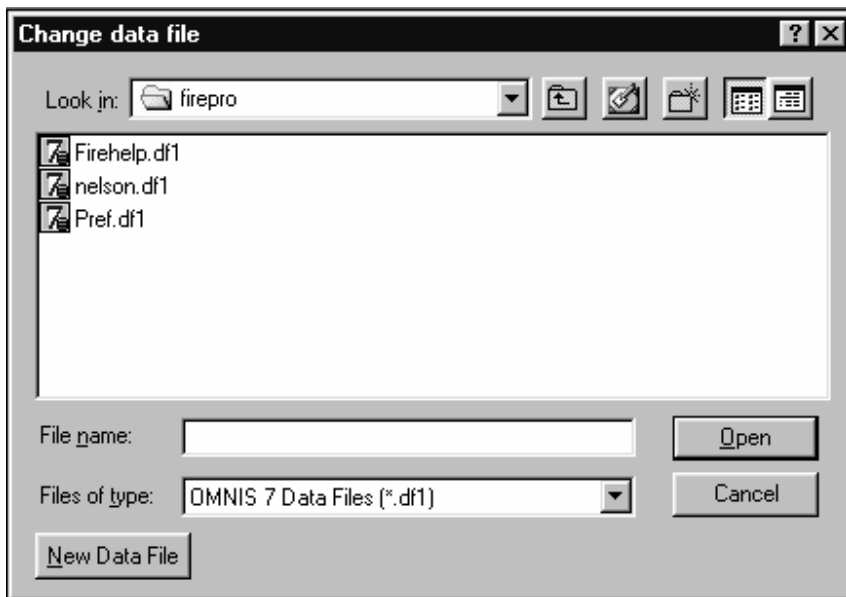
find it from the list

find it using the "Browse" button (if your software has one)

#### *Extract*

Click the Extract button and you will be asked if you want to replace the existing file of the same name. Respond with "Yes". If you are not asked this question, you are probably extracting it to the wrong location.

After completing the extraction process, start up FirePro 2 and you will be presented with the following window:



Information entered here will tell the program where your data file is. Double-click on your data file -- It is named "your town".df1. In the above example, the data file is name "nelson.df1"). Do not select Firehelp or Pref.

If your data file is stored on a server or another computer, you will need to find the correct path to it. Once you can see your data file, click "Open".

**WARNING:**

Never click the NEW DATA FILE button as this will create a new data file, which will not work for you. If this is done accidentally and you save a new data file, quit the program, find that data file and delete it.



Quote of the week:

"Vegetables are a must on a diet. I suggest carrot cake, zucchini bread, and pumpkin pie." *Jim Davis*