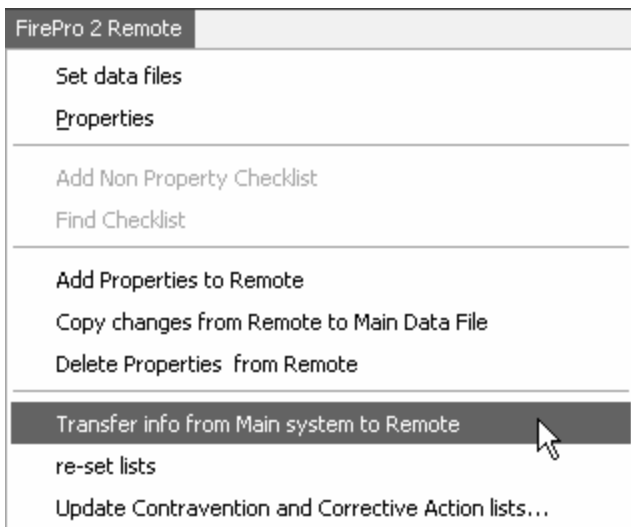




Transfer Info from Main System to Remote

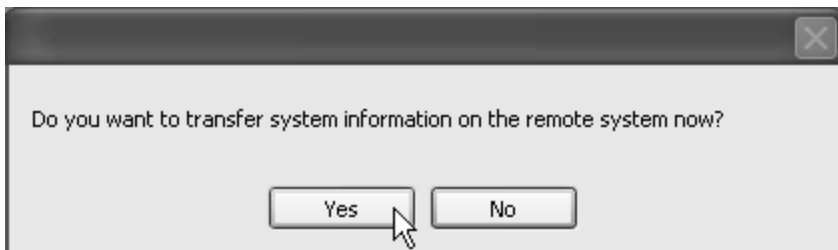
This tip really only applies to departments with remote inspections or remote inspection checklists.

This will copy over settings from the main data file to the remote. This should be run after Set-up or Maintenance changes have been made on the main system, to keep them both up to date.



To transfer the information from the main system to the remote, go to: FirePro 2 Remote → Transfer info from Main system to Remote

You will get a dialogue box (as below) Click "Yes".



It used to be that when you transferred information from the main system to the remote that everything was transferred, and that could take a long time. Not anymore! You can now select the items you wish to transfer from the list.

General System Information & Remote Lists is checked by default and should stay checked, as there may have been changes made that you are not aware of or that affect the data that you may not realize.

Items to Transfer to the Remote	
System Information	Transfer
General System Information & Remote Lists	<input checked="" type="checkbox"/>
Passwords	<input type="checkbox"/>
Window Appearance	<input type="checkbox"/>
Station Information	<input type="checkbox"/>
Custom Pre-Plan Design Lists	<input type="checkbox"/>
Master Checklist Items	<input type="checkbox"/>
Custom Lists	<input type="checkbox"/>
<div style="text-align: center;"><input type="button" value="Cancel"/> <input type="button" value="OK"/> <input type="button" value="Check All"/></div>	

Only check the "Custom Lists" if absolutely necessary as this will take quite a while to update. All other items will update very quickly.



Quote of the week:

"It ain't the heat, it's the humility."

Yogi Berra